

NON-FINANCIAL INDICATORS

ERDIL - 2020

COLLABORATORS

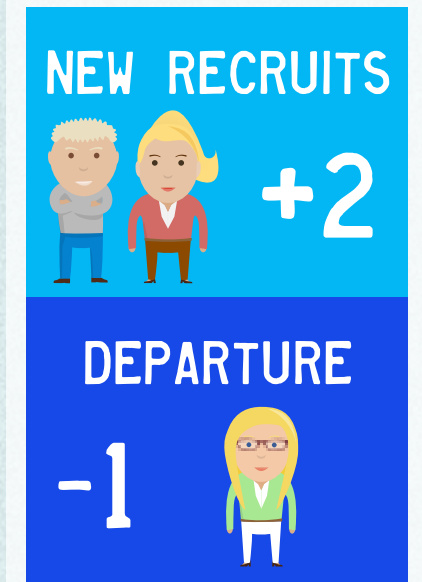


23 COLLABORATORS
PERMANENT CONTRACT: 100%

AVERAGE AGE
(YEARS)



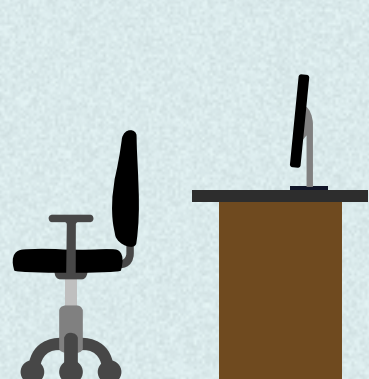
AVERAGE SENIORITY
(YEARS)



WORKPLACE ACCIDENTS



ABSENTEEISM RATE



AVERAGE RATE: 1%
AVERAGE RATE (EXCEPT MATERNITY/PATERNITY LEAVE): 1%

COLLABORATORS WITH AN EXECUTIVE POSITION

91%

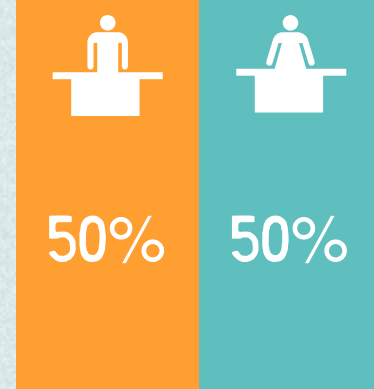
DISTRIBUTION



EXECUTIVES

52% OF WOMAN AMONG EXECUTIVES

SENIOR EXECUTIVES

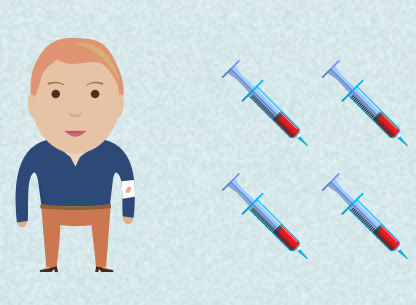


NOTEWORTHY ACTIONS

BLOOD DONATION

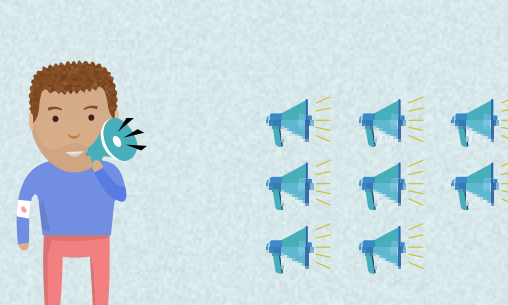
Blood donation is a prominent issue at local and national level. ERDIL wished to raise awareness on this topic among its collaborators.

In 2020,



+4

collaborators participated in a blood donation following our communication on this topic. They come in addition to the other collaborators who regularly donate.

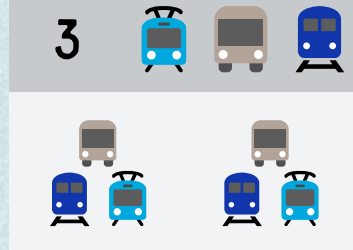
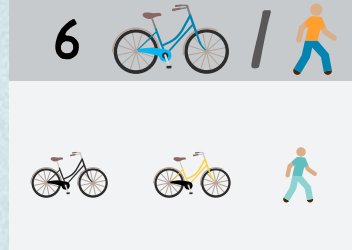
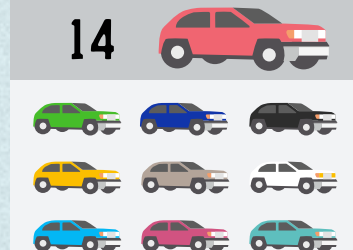


8

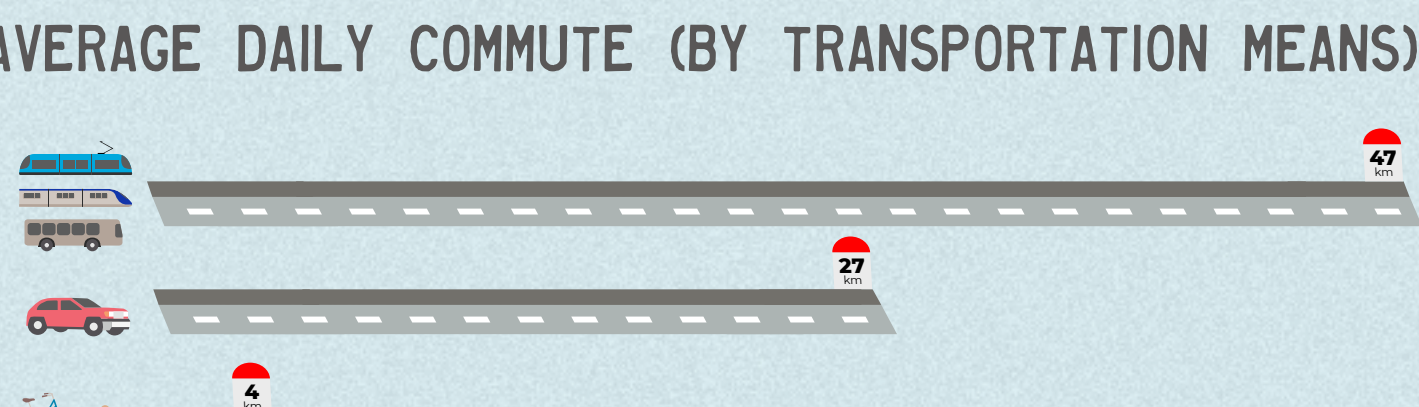
collaborators raised, in turn, awareness among relatives and friends.

COMMUTING & BUSINESS TRIPS

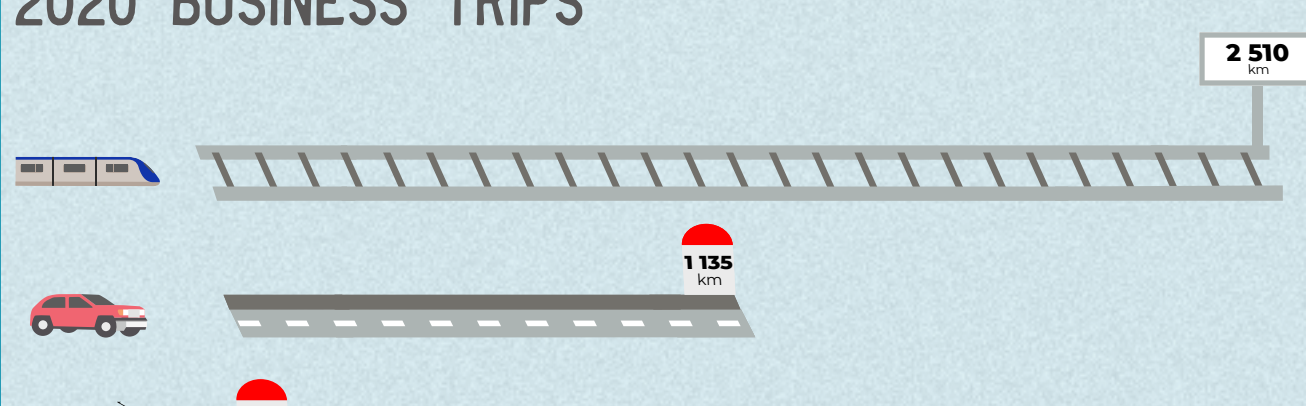
HOW DO COLLABORATORS COMMUTE TO WORK?



AVERAGE DAILY COMMUTE (BY TRANSPORTATION MEANS)

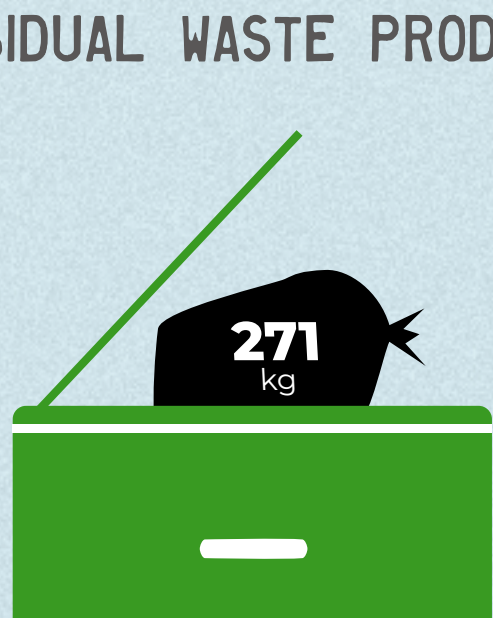


2020 BUSINESS TRIPS



POWER CONSUMPTION

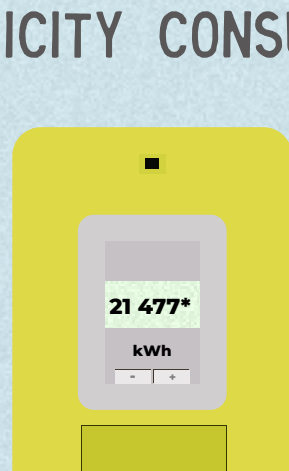
RESIDUAL WASTE PRODUCTION



...AVERAGE FOR EACH COLLABORATOR:



ELECTRICITY CONSUMPTION



This document is the property of ERDIL SAS. This document and its contents, including extracts, may not be communicated or sent to third parties, duplicated or reproduced (in any form, digital or not), without the explicit written agreement of ERDIL SAS.

* This number encompasses the lockdown period (from March to May) while the activity in ERDIL's office was limited.